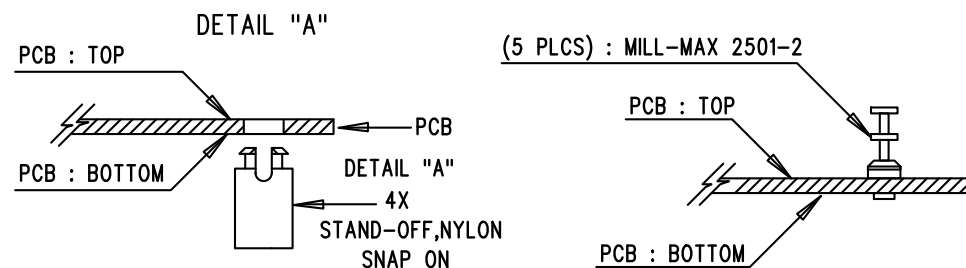


SEE DETAIL "A"

NOTES: UNLESS OTHERWISE SPECIFIED

1. WORKMANSHIP SHALL BE IN ACCORDANCE WITH IPC-A-610.
2. ASSEMBLY PROCESS SHALL INCLUDE: REFLOW SOLDER TOP SIDE SMD.
3. PARTS TO OMIT WILL BE SPECIFIED ON THE BILL OF MATERIALS
LOCATIONS OF OMITTED PARTS SHALL BE FREE OF SOLDER.
MASK THE SOLDER STENCIL WHERE SMT PARTS ARE OMITTED.
4. INSTALL SHUNTS AS SHOWN ON ASSY DRAWING.
5. DEPANELIZE BOARDS AFTER ASSEMBLY AND ROUTE-OUT THE BREAKOUT TABS ON FOUR SIDES OF THE BOARD EDGE.
6. MAXIMUM SOLDER TEMPERATURE IS 240 DEGREES CELCIUS.
7. INSTALL TURRETS AND 4 STAND-OFFS AT FOUR CORNERS AS SHOWN BELOW:



APPROVALS

| NAME |
|--------------------|
| PCB DES. NC |
| APP ENG. GEORGE B. |
| |
| |
| |
| |
| |
| SCALE = NONE |



1630 MCCARTHY BLVD
 MILPITAS, CA 95035
 PH: (408)432-1900
 www.Linear.com
 LTC CONFIDENTIAL-
 FOR CUSTOMER USE ONLY

TITLE: TOP ASSEMBLY DRAWING:
 WIDE VIN RANGE, LOW NOISE
 250mA BUCK-BOOST CHARGE PUMP

| SIZE | IC NO. | REV. |
|-------------------------|-------------------------------|------------|
| N/A | LTC3245 DEMO CIRCUIT 1802A | 2 |
| FILENAME: DC1802A-2.PCB | | SHT 1 of 2 |